

Fraser Specialty Products

F-SIDING Installation Guide



INSTALLATION NOTES & INSTRUCTIONS

The following instructions pertain to the installation of Fraser Specialty Product's (FSP's) **F-SIDING™** on a typical wood frame construction allowing for nail penetration of 1-1/4" (min.) through the siding into solid wood every 16". If your construction is of a different type, please call FSP at **1-866-630-2495** for installation instructions.

Please read the following instructions prior to beginning your installation of **F-SIDING**. The following installation guidelines have been produced in accordance with the National Building Code of Canada. Please check with your local authorities for particular installation codes within your area.



➤ **The FSP Q-Factor — Our Quality Pledge**

Fraser Specialty Products Inc. strictly adheres to production procedures to deliver exceptional quality wood siding that meets or exceeds industry standards. If, for any reason, you encounter any unsatisfactory product, please call Fraser Specialty Products at **1-866-630-2495 PRIOR TO INSTALLATION**. FSP will replace any material found to be unacceptable prior to installation. FSP does not warrant the installation of its product. **It is the installer's responsibility to ensure that the siding is correctly installed.**

➤ **F-SIDING Installation Tips**

- Horizontal application is recommended for Bevel with Shiplap, Clapboard and Cove siding.
- Vertical applications are recommended Board & Batten siding.
- Use either a horizontal or vertical application for Channel, and Shiplap with V-joint siding.
- Provide a minimum of 6" finish grade ground clearance.
- A continuous positive vapor barrier must be installed on the inside of conditioned exterior walls.

➤ **Installer's Responsibilities**

- Ensure that the **F-SIDING** is installed in accordance with the instruction guidelines supplied by FSP Inc.
- Follow local bylaws and building codes.
- Seal all cuts and minor damage to finished surfaces with FSP Touch-up Paint.
- Use a chalk line, story pole or jig block to obtain a 1/16" clearance between shiplap joints.
- Nails must penetrate solid wood (i.e. sheathing and stud) by 1 1/4". Nailing to the sheathing only, does not properly secure the siding.
- Siding must not be installed over wet sheathing. Use kiln dried sheathing and strapping. Allow rain soaked materials to dry prior to installation.
- Butt joints must be made over solid wood to provide secure nailing. For best results miter butt joints 45°. Do not lift pieces to allow for alignment. Cut along the top and touch up the cut. Raising one end results in unlocking.



Fraser Specialty Products uses premium quality Cabot Factory Finish, so you can offer your customers the best protection for their wood siding investment.





➤ Before you begin — **F-SIDING** Storage

Your **F-SIDING** must be kept dry prior to installation. **F-SIDING** should be stored off the ground on a flat surface under a roof or under a waterproof covering. FSP's finish is a breathable acrylic paint that allows for the transfer of moisture in and out of the siding. Wet siding will expand across the width.

FRASER SPECIALTY PRODUCTS SHALL NOT BE RESPONSIBLE FOR PROBLEMS CAUSED BY IMPROPER STORAGE OR HANDLING.

➤ Preparation — **Weatherproofed Walls** (Rain Screen Method)

The proper application of an approved sheathing membrane under the **F-SIDING** is required to weatherproof exterior walls, as per the National Building Code of Canada. The sheathing membrane provides a continuous barrier to prevent drafts and the entry of wind-driven rain into the wall cavity.

Joints in the siding are not designed to prevent the passage of wind and rain. Therefore, the moisture inside the wall may occur with sustained exposure to strong winds. Moisture may also be driven through nail penetrations and overlap joints of the sheathing membrane. To improve the siding's resistance against moisture penetration, installers must use the **Rain Screen Method** construction technique. The **Rain Screen Method** requires that the siding be fastened to vertical wood strapping placed over the sheathing membrane and attached to the wall studs. This provides an air space for wind-driven moisture to flow down the back face of the siding to vents at the bottom of the wall. Further details on the Rain Screen strapping method can be obtained by contacting any office of the Central Mortgage and Housing Corporation in Canada or by consulting the FSP website (www.fraserspecialty.com).

IMPORTANT: **F-SIDING MUST BE INSTALLED ON STRAPPING TO MAINTAIN WARRANTY**

➤ Preparation — **Installing **F-SIDING** over rigid insulation**

Rigid foam sheathing and other rigid insulations can result in moisture accumulation on the back of the siding and cause staining, buckling and damage to finish coats. The installation of **F-SIDING** over rigid foam sheathing must meet the following conditions:

- **F-SIDING** must be applied to strapping, creating an air space between siding and rigid foam or fiberglass to allow for the venting of accumulated moisture. Strapping must be a full 1" thick and kiln dried.
- Building paper or an equivalent building wrap must be applied over the foam sheathing, glass clad, etc.

In addition to the above conditions, the following recommendations are meant to minimize potential problems when wood sidings are applied over rigid foam sheathing and other rigid insulations:

- Use thicker siding patterns in widths of 6" or less. Thick, narrow siding is more stable than thinner, wider patterns and better able to resist dimensional changes.
- Choose light colors to maximize heat reflection and reduce dimensional movement.



Nailing Instructions

- Use FSP Finished Wood Siding Nails.
- Nail at 16" centers into studs.
- Drive nails so that the head is just in contact with the siding surface. (see Figure 1)
- If nails are driven below the surface, they must be sealed. Failure to do so voids coating warranty.
- Nails must penetrate solid wood (sheathing and studs) by a minimum of 1 1/4".
- Do not use power nailers.

CONDITION	CORRECTION
Snug	OK
Protruding	Drive Snug
Overdriven	Seal

Figure 1

See the figures below for additional information:

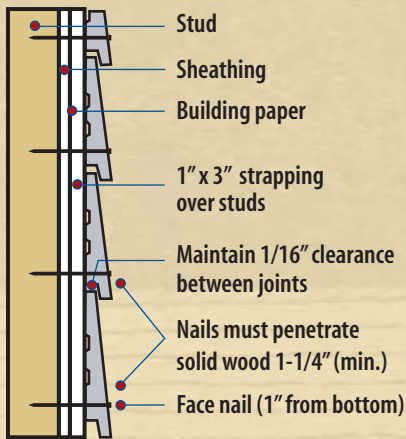


Figure 2
Shiplap Siding

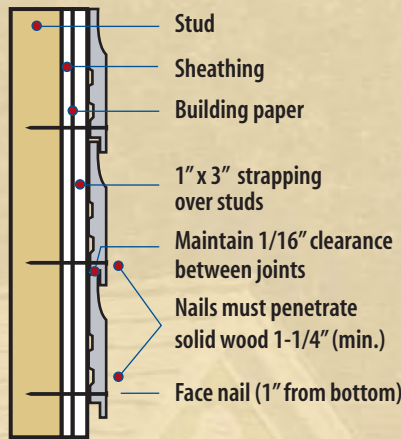


Figure 3
Cove Siding

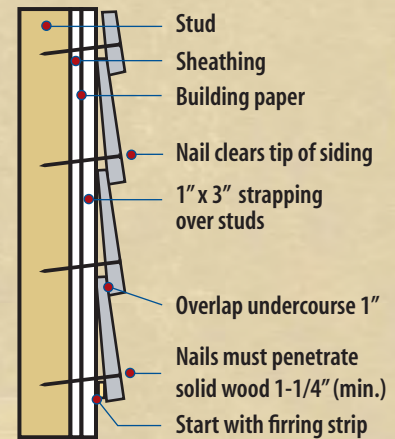


Figure 4
Standard Bevel

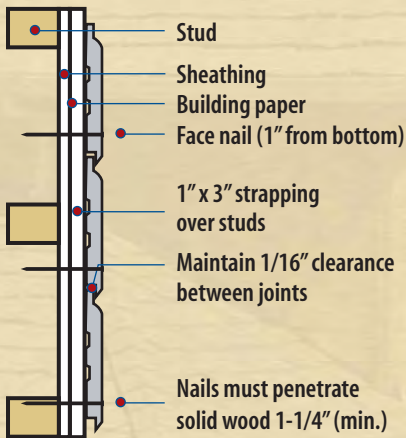


Figure 5
V-Joint Siding (vert.)
(also applicable for horiz. installation)

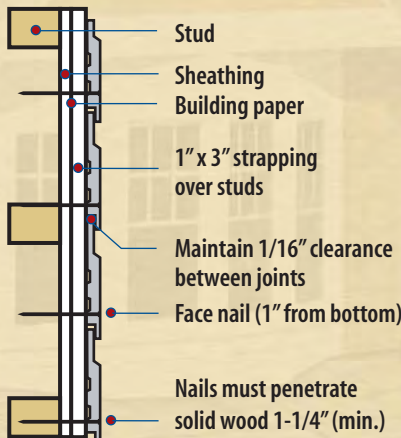


Figure 6
Channel Siding (vert.)
(also applicable for horiz. installation)

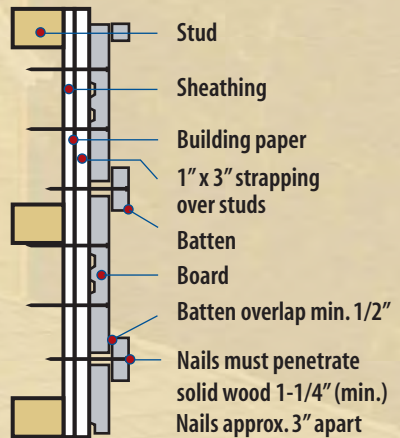


Figure 7
Board & Batten Siding (vert.)

IMPORTANT: APPLICATION OF PRODUCT CONSTITUTES ACCEPTANCE OF CONDITION OF PRODUCT.

➤ Caulking

For optimal results, use a quality, color-matched or clear caulking.

- Caulk all siding butt joints with a small bead.
- Caulk all joints where siding meets corners, windows, doors and all trim.

➤ Typical Installations

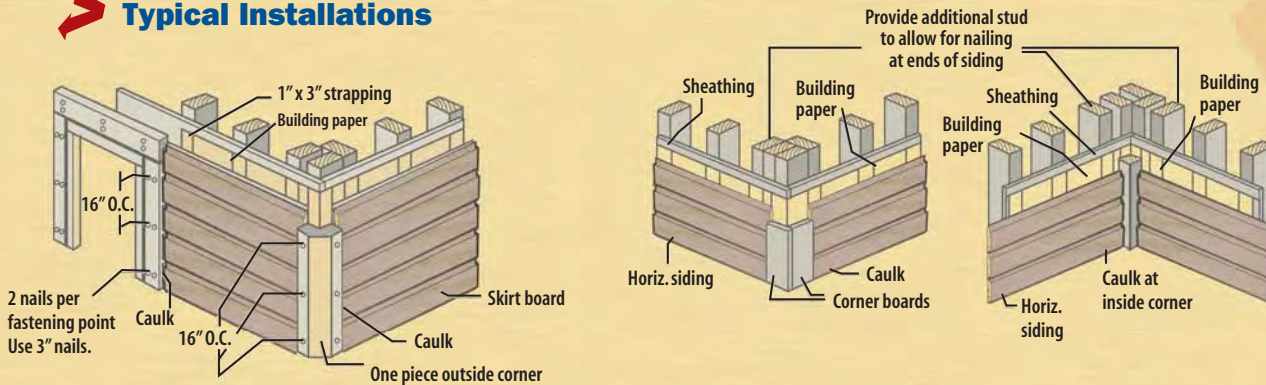


Figure 8
Typical corner
& trim details

Figure 9
Typical trim
details

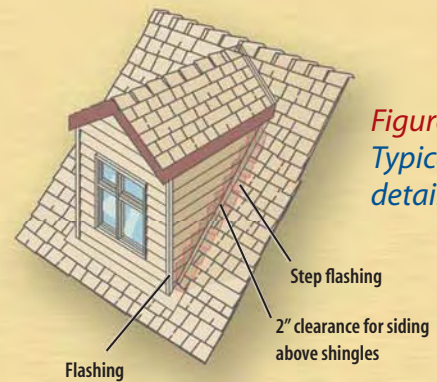
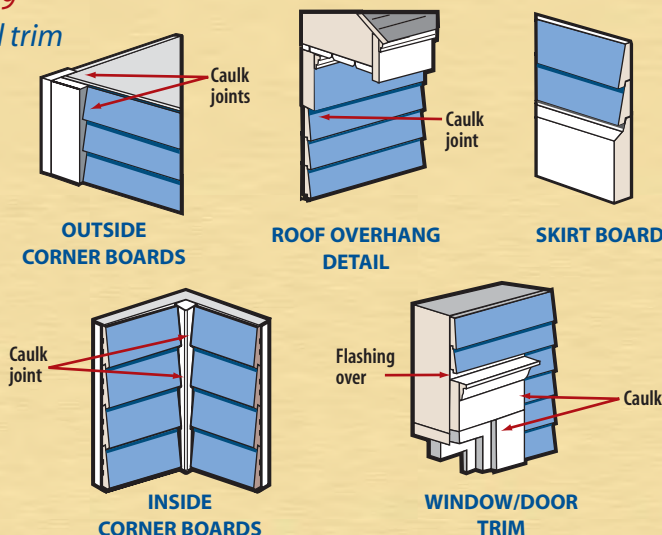


Figure 10
Typical dormer
detail

➤ Siding Installation Tips

Siding must not touch masonry.

- Do not let **F-SIDING** come in direct contact with any form of concrete.
- Space siding or skirt board 1/2" away from foundation.
- Lap bottom sill plate by 1/2".

➤ Repairs and Touch Ups

The following must be sealed using a minimum of two coats of FSP Touch Up paint:

- Minor scrapes and damage created during installation of **F-SIDING**.
- All ends.
- Large wood surfaces created by ripping and mitering.

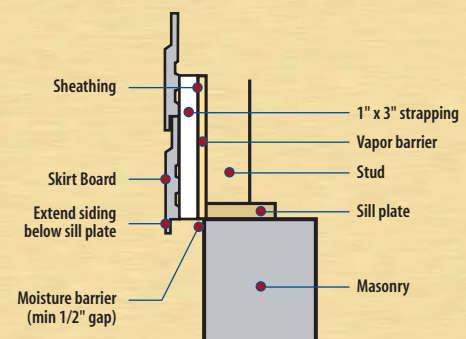


Figure 11
Siding must not
contact masonry